

2,863 FIRST FLOOR FINISHED SQ FT

ARCHITECT:  
**JSD**  
 JOHN S. ODOM  
 JSD SERVICES, LLC  
 P.O. BOX 410394  
 SAINT LOUIS, MISSOURI 63141  
 PH: 1.417.343.2602  
 WWW.JOHNSODOM.COM  
 E-MAIL: JOHN@JOHNSODOM.COM

CONTACT: JOHN S. ODOM  
 MISSOURI ARCHITECTURAL  
 CORPORATION LICENSE NUMBER:  
 2009030445

PROJECT:  
 NEW CUSTOM RESIDENCE  
 FOR:  
 41 TOPPING LANE  
 DES PERES, MISSOURI 63131

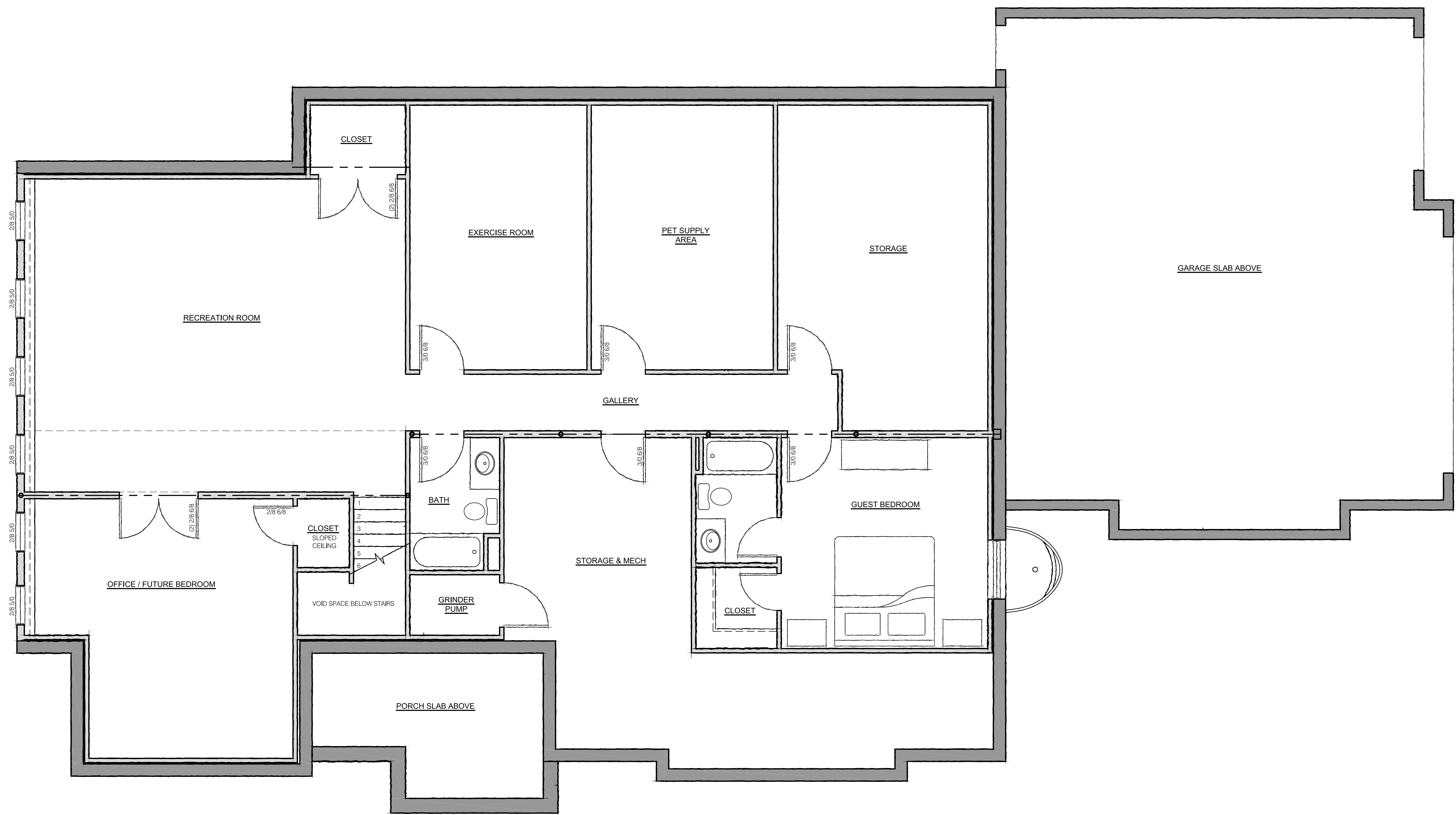
GENERAL CONTRACTOR:  
  
**BENCHMARK HOMES**  
 BENCHMARK HOMES  
 13281 SPINDLE LANE  
 ST LOUIS, MISSOURI 63122  
 OFFICE / FAX: 1.314.939.7593  
 CELL: 1.314.749.7750  
 WWW.BENCHMARKHOMESSTL.COM  
 E-MAIL: JEFF@BENCHMARKSTL.COM  
 CONTACT: JEFF BRINKMAN

JOHN S. ODOM, ARCHITECT  
 MISSOURI LICENSE NUMBER:  
 A-2009027291  
 THIS SEAL IS FOR ARCHITECTURAL  
 INFORMATION ONLY

**SPECIAL NOTICES**  
 In the event the client consents to, allows, authorizes or approves changes to any plans, specifications or other construction documents, and these changes are not approved by the design professional, the client recognizes that such changes and the results thereof are not the responsibility of the design professional. Therefore, the client agrees to release the design professional from any liability arising from the construction, use or result of such changes. In addition, the client agrees to the design professional's liability from any damage, liability or cost (including reasonable attorney's fees, and costs of defense) arising from such changes. Copyright © 2022 by JSD Services, LLC. All rights reserved. No part of this drawing may be reproduced by photocopying or by any other means, or stored, processed, or transmitted in any form or by any means, without the prior written permission of the Architect.

Drawn: JSD Date: 05/10/22

**A1.1**  
 FIRST FLOOR PLAN



ARCHITECT:  
**JSD**  
 JSD SERVICES, LLC  
 P.O. BOX 410394  
 SAINT LOUIS, MISSOURI 63141  
 PH: 1.417.343.2602  
 WWW.JOHNSODOM.COM  
 E-MAIL: JOHN@JOHNSODOM.COM

CONTACT: JOHN S. ODOM  
 MISSOURI ARCHITECTURAL  
 CORPORATION LICENSE NUMBER:  
 2009030445

PROJECT:  
 NEW CUSTOM RESIDENCE  
 FOR:  
 41 TOPPING LANE  
 DES PERES, MISSOURI 63131

GENERAL CONTRACTOR

**BENCHMARK HOMES**  
 BENCHMARK HOMES  
 13281 SPINDLE LANE  
 ST LOUIS, MISSOURI 63122  
 OFFICE / FAX: 1.314.939.7593  
 CELL: 1.314.749.7750  
 WWW.BENCHMARKHOMESSTL.COM  
 E-MAIL: JEFF@BENCHMARKSTL.COM  
 CONTACT: JEFF BRINKMAN

JOHN S. ODOM, ARCHITECT  
 MISSOURI LICENSE NUMBER:  
 A-2009027291  
 THIS SEAL IS FOR ARCHITECTURAL  
 INFORMATION ONLY

**SPECIAL NOTICES**  
 In the event the client consents to, allows, authorizes or approves changes to any plans, specifications or other construction documents, and these changes are not approved in writing by the design professional, the client recognizes that such changes and the results thereof are not the responsibility of the design professional. Therefore, the client agrees to release the design professional from any liability arising from the construction, use or result of such changes. In addition, the client agrees to the fullest extent permitted by law, to indemnify and hold the design professional harmless from any damage, liability or cost (including reasonable attorney's fees, and costs of defense arising from such changes). Copyright © 2022 by JSD Services, LLC. All rights reserved. No part of this drawing may be reproduced by photocopying or by any means, or stored, processed, or transmitted in or by any computer or other systems without the prior written permission of the Architect.

Drawn: JSD Date: 05/12/22

**A1.0**